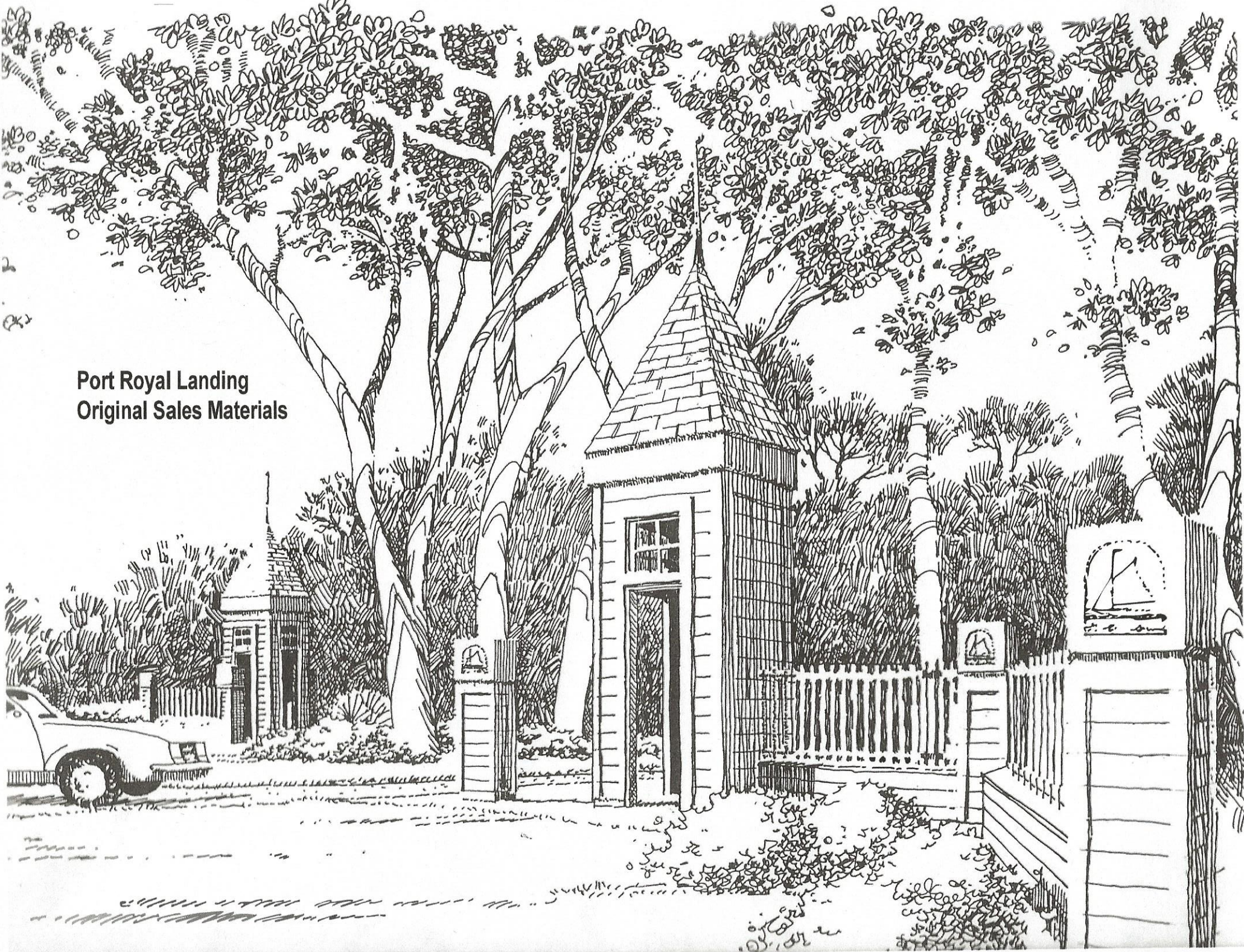
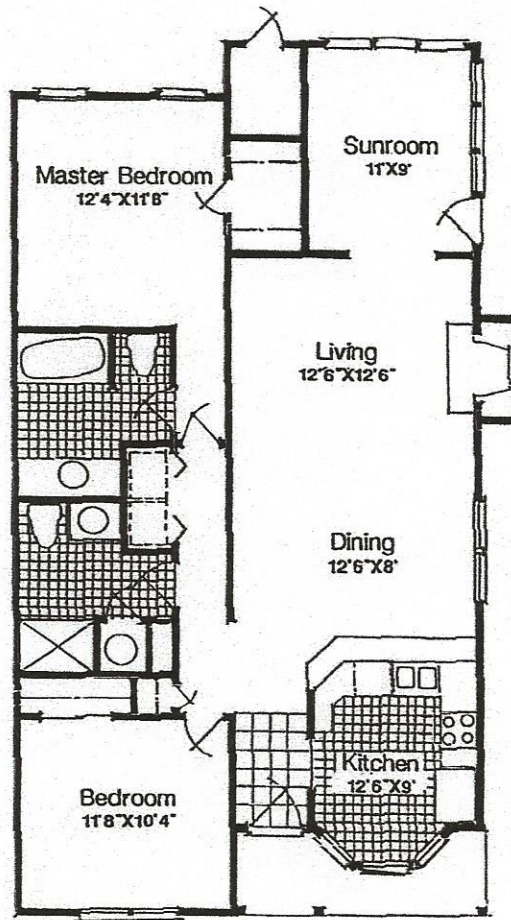


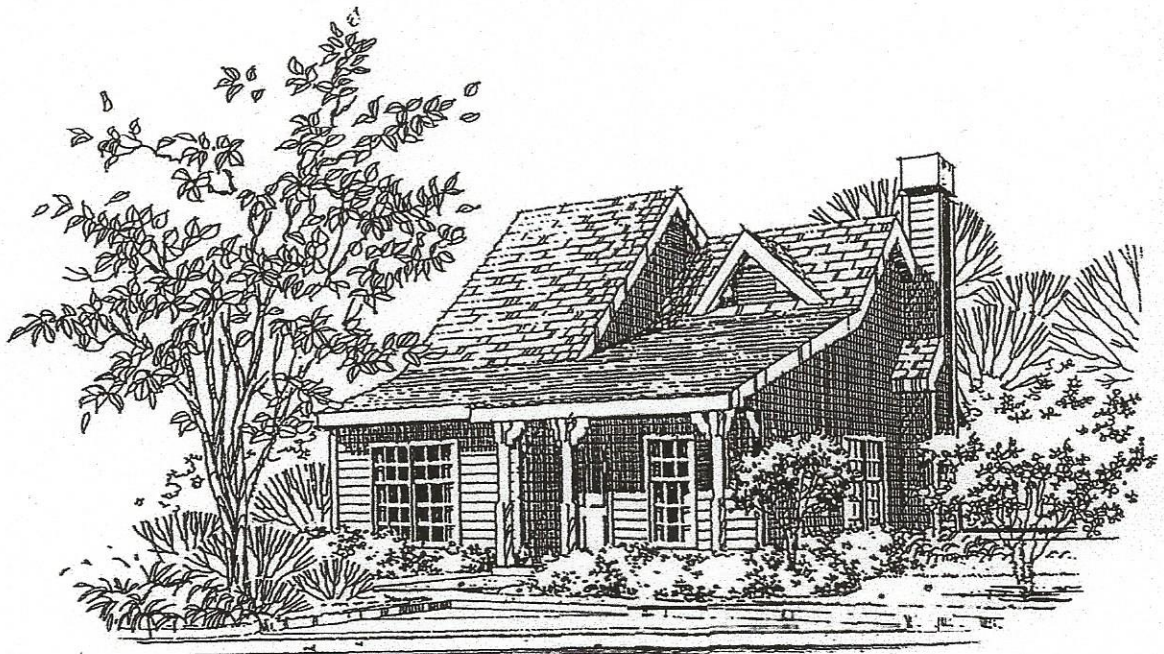
**Port Royal Landing
Original Sales Materials**

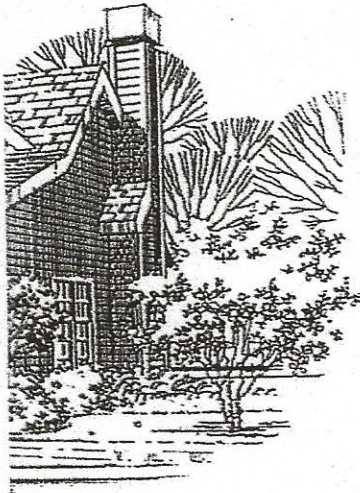
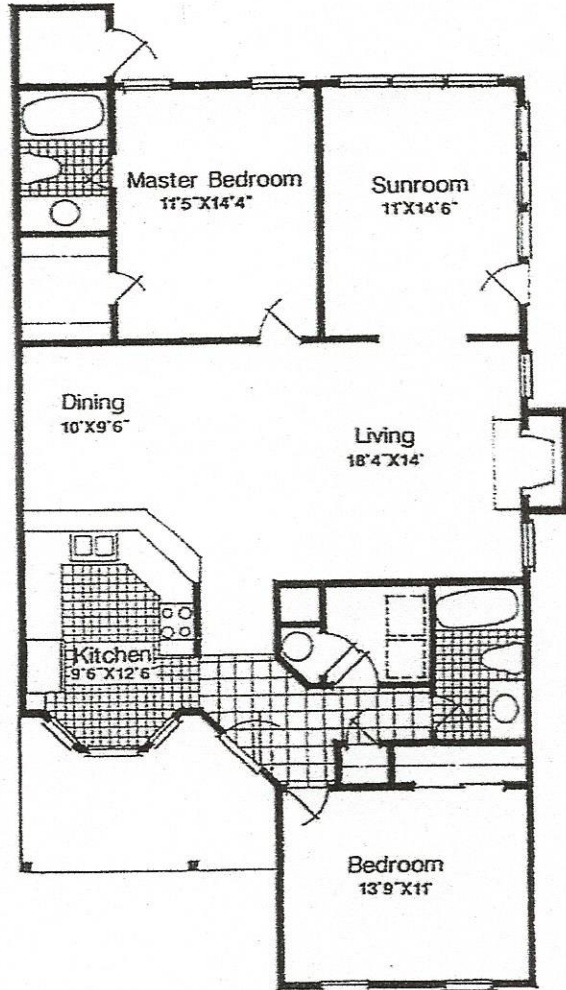
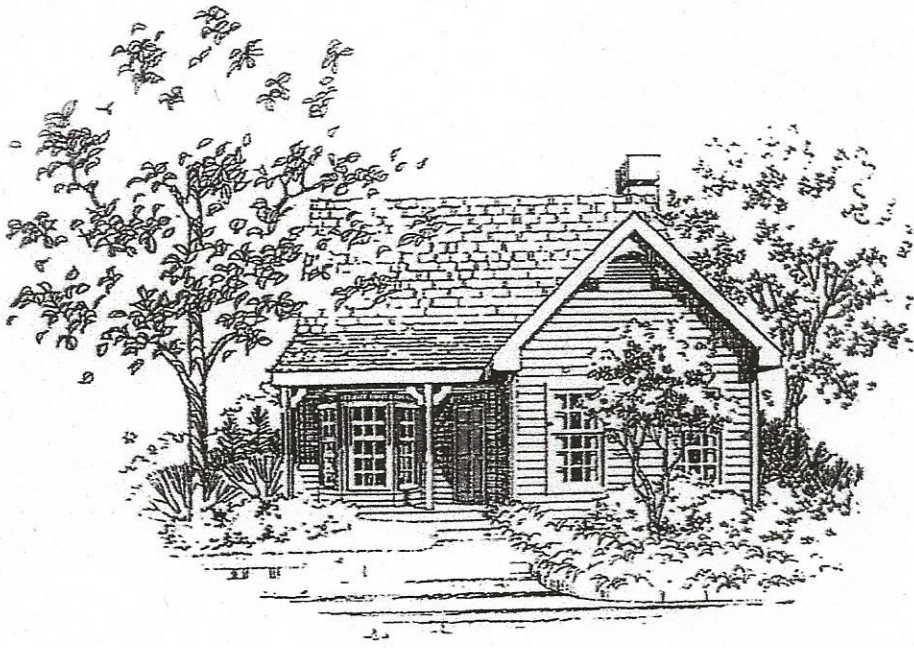




The Gables

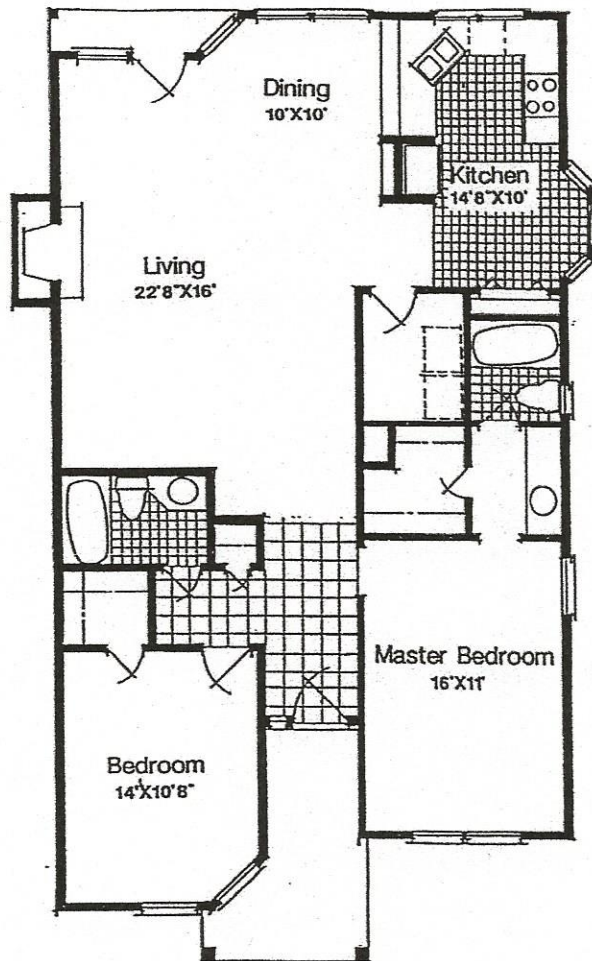
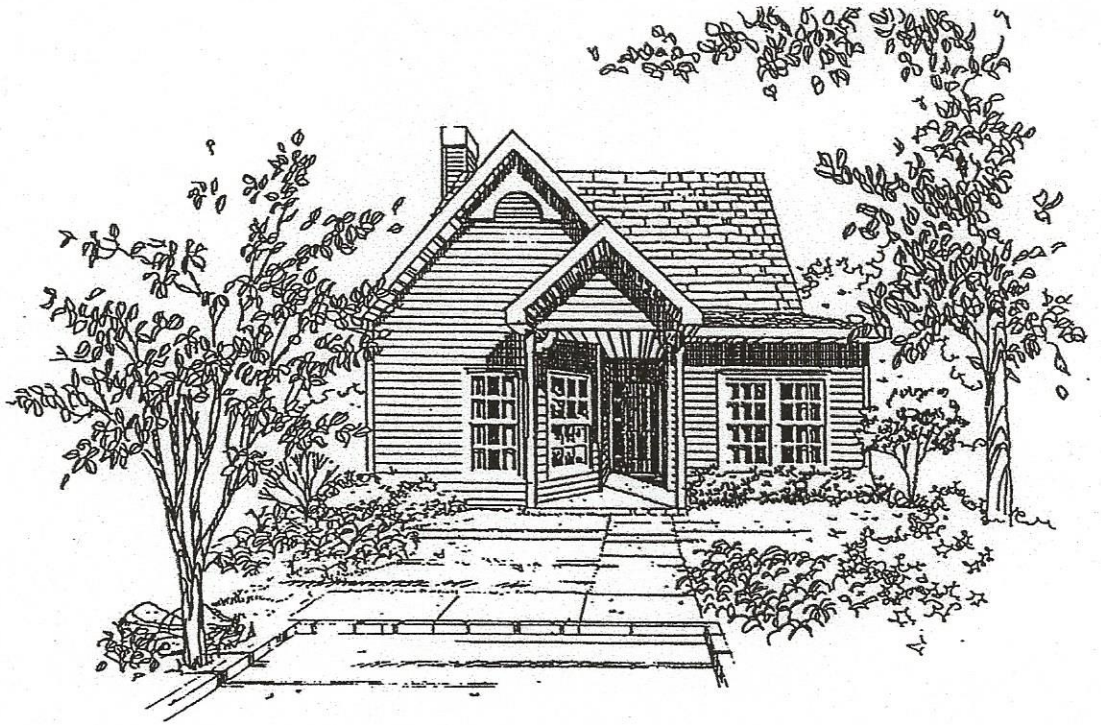
1186 sq. ft. Heated





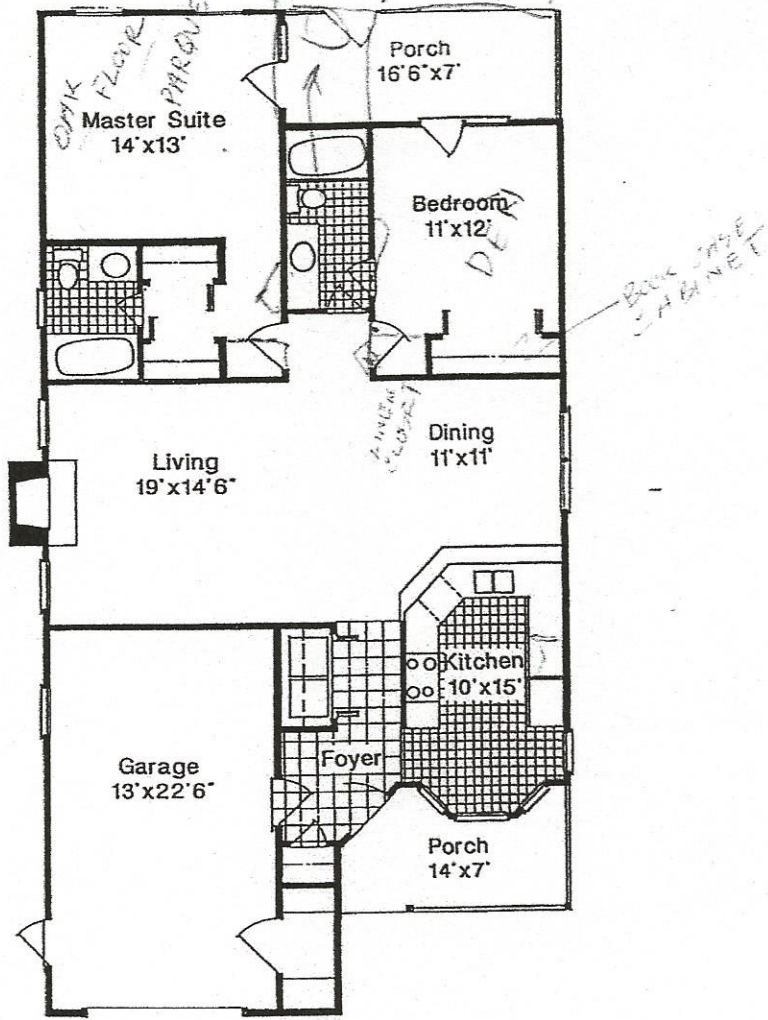
The Savannah

1323 sq. ft. Heated



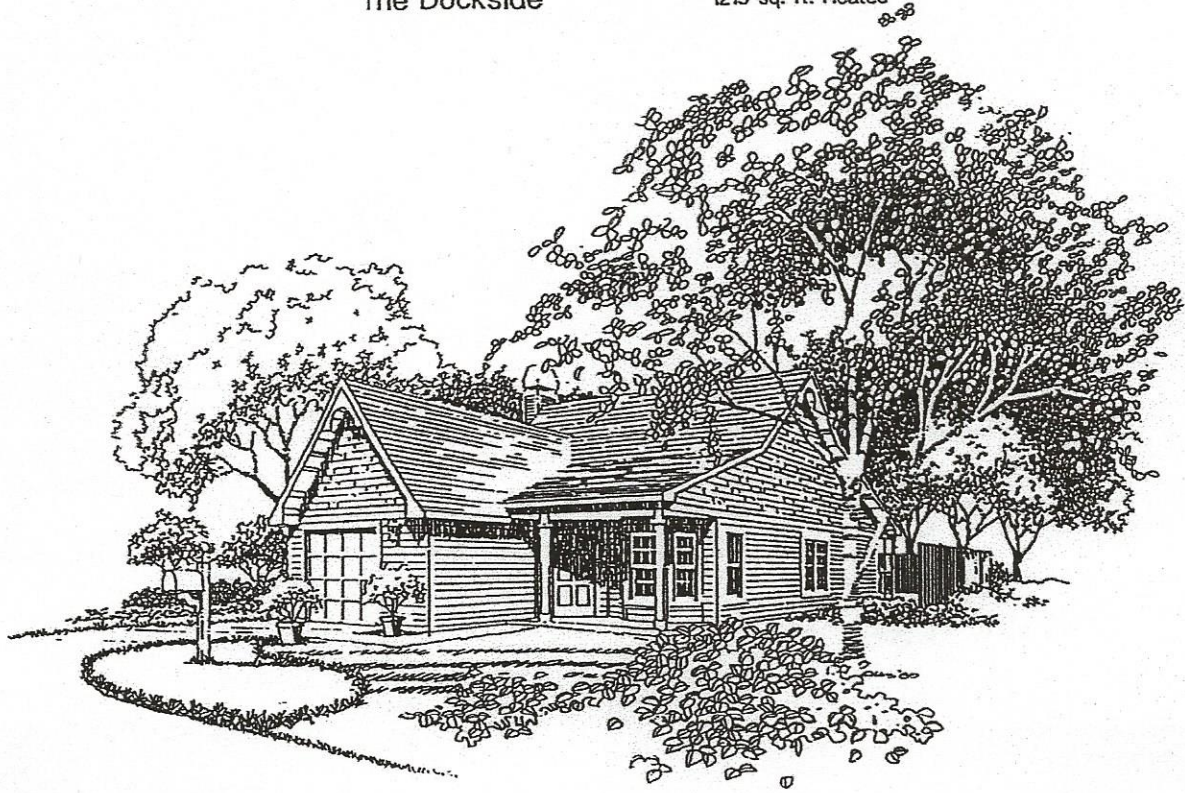
The Marsh Cottage

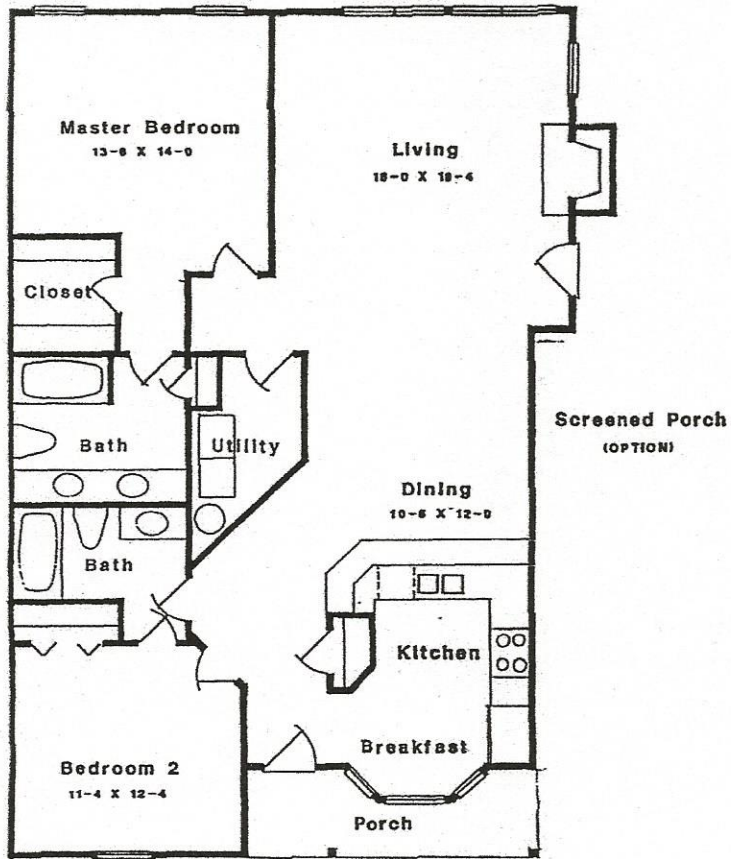
1312 sq. ft. Heated



The Dockside

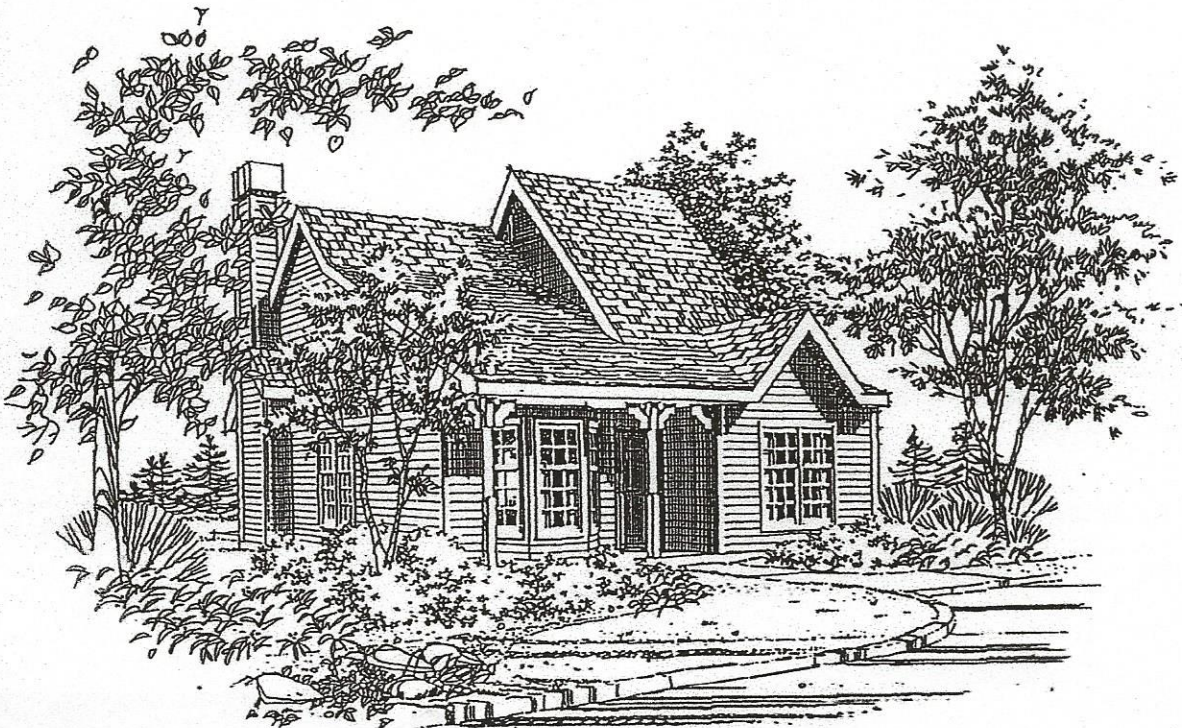
1215 sq. ft. Heated





The Carolina

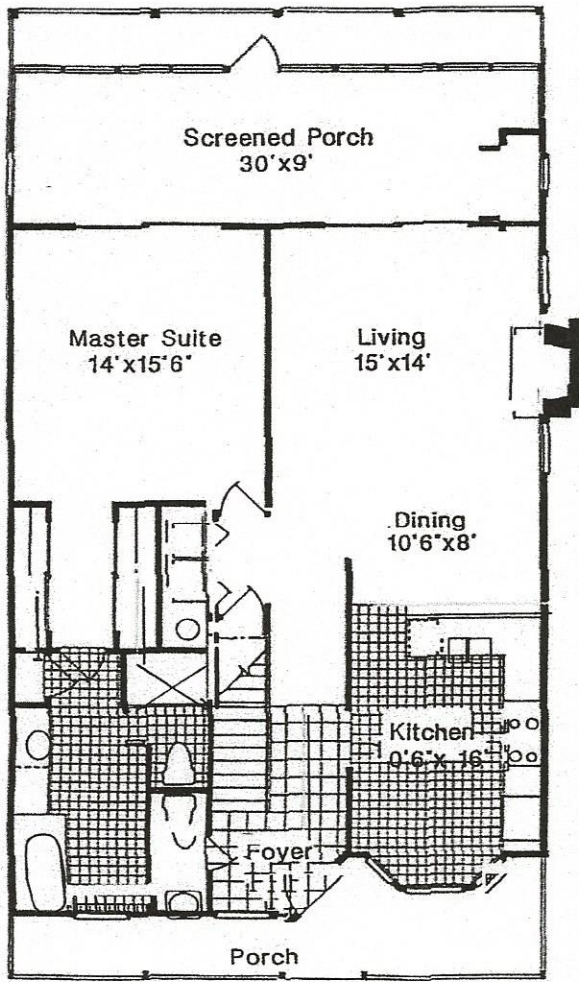
1338 sq.ft. Heated





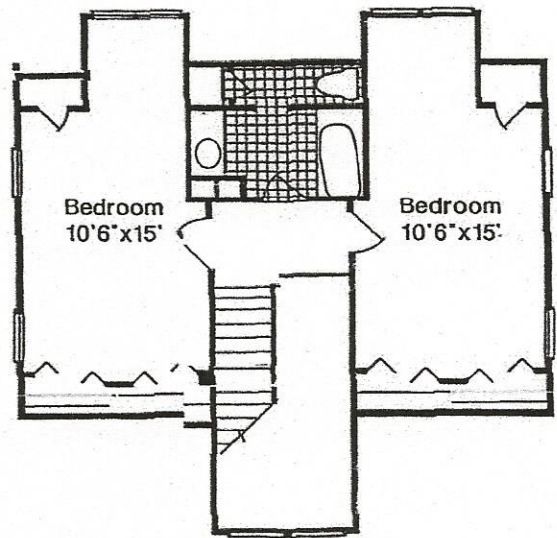
The River Cottage

The River Cottage Floor Plan



The River Cottage

1179 sq. ft. Heated



556 sq. ft. Heated

Standard Exterior Features

- . Traditional South Carolina low country architecture
- . Covered front porches
- . Sunroom
- . Unique 12/12 and 4/12 roof pitches
- . Off road parking
- . Maintenance free aluminum double paned windows for beauty and added insulation
- . Front doors have brass kick plates
- . Double paned French doors
- . Deadbolt locks on all exterior doors
- . Fiberglass roof shingles guaranteed for 20 years
- . Patio

Standard Interior Features

- . Nine foot, smooth finished ceilings
- . Unique open floor plans
Minimum 200 sq. ft. floored attic space
- . Disappearing attic stairs
Crown moldings in entertainment areas
Smoke detectors
- . Polished brasstone light fixtures, door handles and locks
- . Ventilated wire shelving
- . Wall to wall carpeting in your choice of colors
- . Six panel colonial-style doors
- . Bay windows (selected floorplans)
- . Wallpaper allowance

Foyer

- . Oak parquet flooring
- . Crown molding
- . Guest closet

Note: This brochure is for illustrative purposes only and not part of a legal contract. Floor plans, dimensions, elevations and standard features may vary according to alternate style and location selected and are subject to change without notice. Optional items indicated are available cost.

Living Room

- . Crown molding
- . Fireplace with hearth, recessed art lighting; prewired for recirculating blower
- . Prewired for cable TV

Dining Room

- . Crown molding
- . Chair railing
- . Polished brass traditional chandelier

Kitchen

- . Refrigerator with ice maker
- . Custom oak cabinetry with 42" top cabinets
- . Pantries (selected floorplans) Sunlit breakfast area
- . Entertainment bar with accent lighting and pass-through to dining room
- . Prewired for ceiling fan
- . Fluorescent lighting
- . No-wax vinyl flooring in choice of pattern and color
- . Prewired for telephone
- . Black glass front continuous clean range with hood
- . Pot-scrubber dishwasher
- . Garbage disposal

Laundry

- . Side by side connections for washer and electric dryer
- . Overhead cabinets optional
- . No-wax vinyl floor
- . Dryer vent to outside

Bedrooms

- . Walk-in closets in master suites
- . Mirrored closet doors
- . Prewired for cable TV
- . Prewired for telephone
- . Wall switch controls electrical outlets

Baths.

- . Ceramic tile flooring
- . Custom oak vanities
- . Cultured marble vanity tops
- . Decorator accessories and light fixtures
- . Dressing mirrors
- . Vented exhaust fans

Optional Features Available

- . Ceiling fans
- . Washer and dryer
- . Microwave oven
- . Glass doors and recirculating blower for fireplace
- . Numerous floor coverings
- . Ceramic tile in Sunroom
- . Oak cabinets in Laundry room

Energy Package

- . Energy efficient electric heat pumps
- . Energy efficient electric water heater
- . Energy saving pot scrubber dishwasher
- . Continuous soffit vent
- . Additional insulation in attics increases the "R" factor to R-30
- . 2" x 4" exterior framing with 3½" fiberglass insulation (R-13)
- . Aluminum double paned windows
- . Polystyrene core/steel clad six panel insulated front and French doors with magnetic weather stripping and adjustable threshold with double pane windows increases "R" value by 3½ times
- . Vapor barrier beneath concrete slab prevents moisture infiltration
- . Insulated air conditioning and heating duct work

The Cottages' Ownership.

- . Fee simple ownership of home and lot